



## ENGINEERING COOLING SOLUTIONS

# *mtu*

12V 2000 G23  
12V 2000 G63  
12V 4000 G23-G63  
12V 4000 G43 -G83  
16V 4000 G23-G63  
16V 4000 G43-G83  
20V 4000 G22-G23

# mitsubishi

S12RPTA  
S12RPTA2  
S12HPTA  
S12RPTAA2  
S16RPTA  
S16RPTA2  
S16RPTAA2

# Perkins

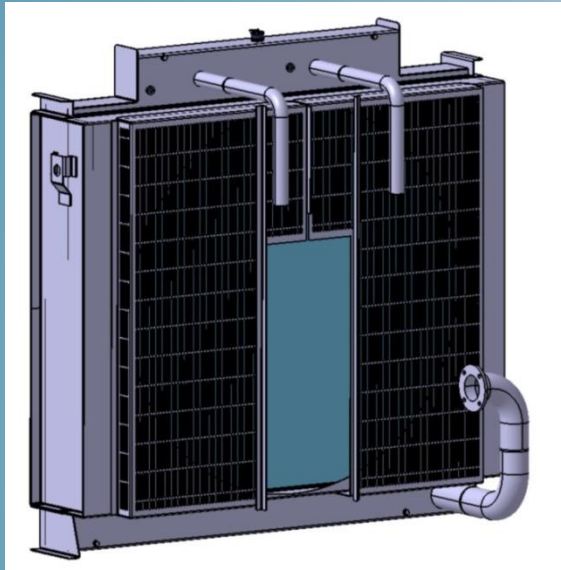
4008 TAG2A  
4012 TWG2A  
4012-46 TWG2A  
4012-46 TWG3A  
4012-46 TAG2A  
4012-46 TAG3A  
4016 TAG2A  
4016-61 TRG2

Radiators are tailored for different environments such as marine or tropical temperatures, for 50 Hz or 60 Hz and with belt driven fan or electrical

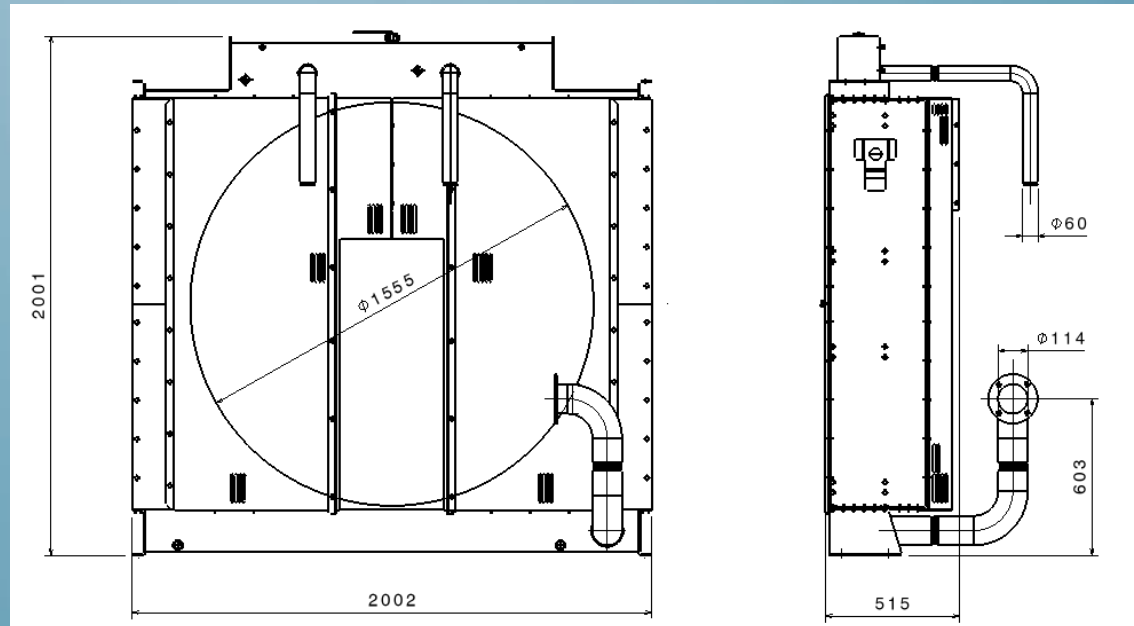
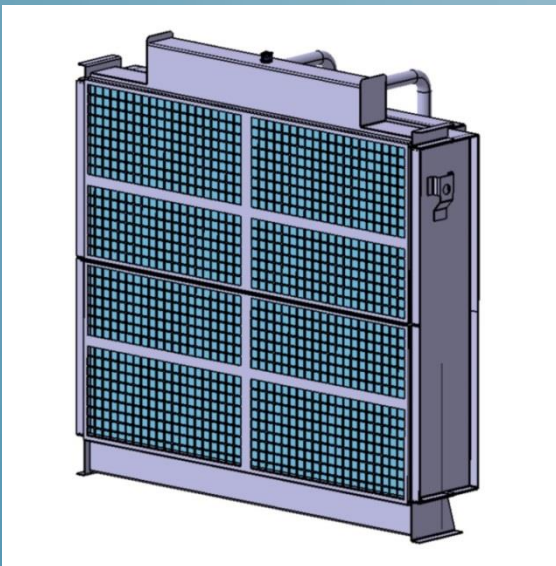
Cooling modules for other different engines are available.



# ENGINEERING COOLING SOLUTIONS



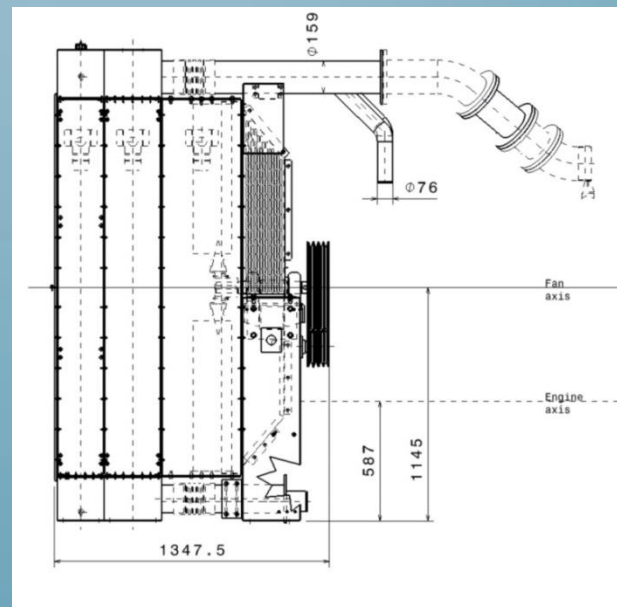
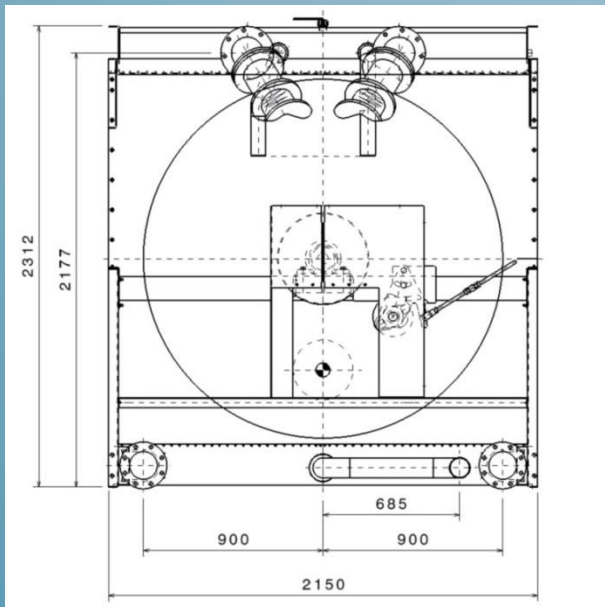
ITEM	UNIT	STAND BY POWER		PRIME POWER	
		60 Hz	50 Hz	60 Hz	50 Hz
Engine Speed	rpm	1800	1500	1800	1500
No. Of Cylinders		12			
Displacement	liter	49,03			
Brake Horse Power without fan	kW	1470	1315	1340	1195
Heat Rejection to Coolant	Kcal/H	758934	660861	686970	600510





# ENGINEERING COOLING SOLUTIONS

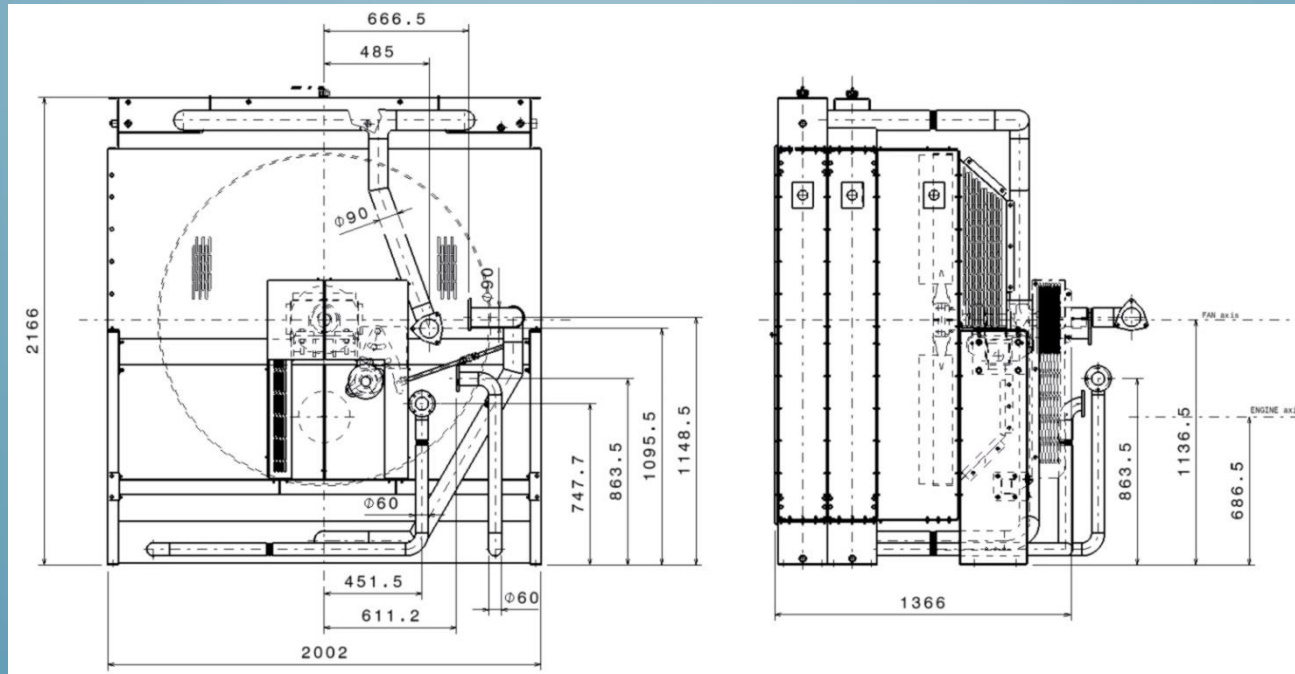
ITEM	UNIT	STAND BY POWER		PRIME POWER	
		60 Hz	50 Hz	60 Hz	50 Hz
Engine Speed	rpm	1800	1500	1800	1500
No. Of Cylinders		16			
Displacement	liter	56,37			
Brake Horse Power with fan	kW	2105	1895	1895	1684
Heat Rejection to Coolant	Kcal/H	594974	518678	535518	461093
Charge Air Heat Rejection	Kcal/H	549206	478780	493425	425624





# ENGINEERING COOLING SOLUTIONS

ITEM	UNIT	CONTINUOUS POWER	FUEL STOP POWER
No. Of Cylinders		12	
Displacement	liter	57,2	
Brake Horse Power	kW	1575	1733
Heat Rejection to Coolant	kW	580	630
Charge Air Heat Rejection	kW	260	340





# ENGINEERING COOLING SOLUTIONS

ITEM	UNIT	CONTINUOUS POWER	STAND BY
No. Of Cylinders			16
Displacement	liter		61,123
Brake Horse Power	kW	1975	2183
Heat Rejection to Coolant	kW	629	
Charge Air Heat Rejection	kW	544	

